

porodo



Porodo

Lifestyle Foldable Mini

Hair Dryer 1300W

SKU: PD-LSFMHD-WH

Table of Contents

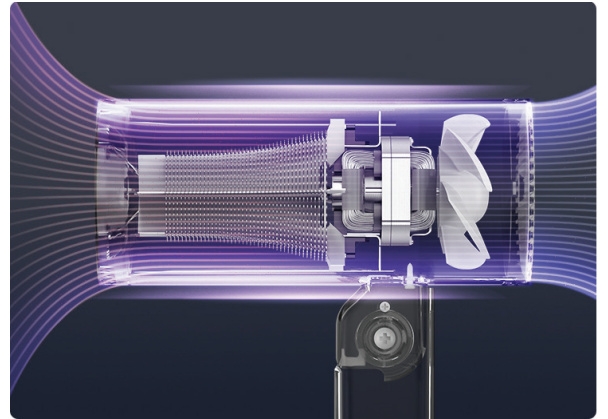
Features.....	2
Schematic View.....	2
Safety Instructions.....	2
Instructions for Use.....	4
Instructions for After Use.....	5
Settings.....	5
Maintenance Instructions.....	5
Specifications.....	6
Warranty.....	7
Contact Us.....	7

Before installing and using the product, please carefully read this User Manual to guarantee correct usage and keep it secure for future reference.

Features

1. Constant Temperature Technology

Experience rapid drying without damage thanks to the 57° constant temperature technology.



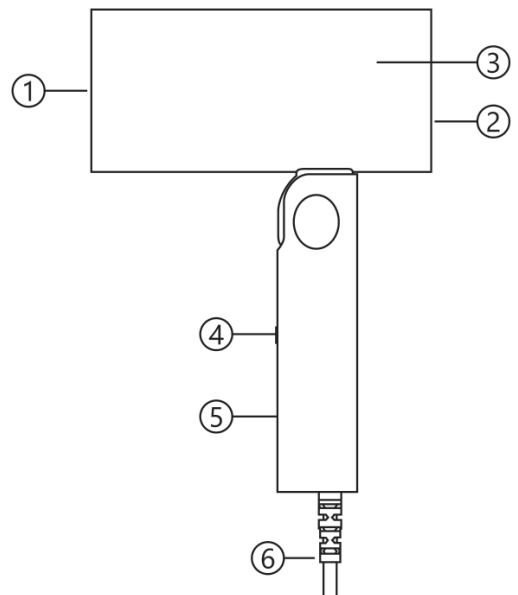
2. Use with Confidence

- 3C Safety Certification
- Enhanced Overheating Protection
- Flame-Retardant Power Cord



Schematic View

1. Outlet
2. Inlet
3. Housing
4. Mode Selector: "II" for Hot, "I" for Cool, and "0" for OFF
5. Handle
6. Power Cord



Safety Instructions

Prioritize these essential safety guidelines before operating the hair dryer to prevent injury to yourself or others. A failure to adhere to these instructions could lead to fire, burns, electrical shock, or other accidents.

Warnings: Failure to comply with the following instructions may result in fire hazards, scalding, short circuits, or electric shock incidents.

- 1.** Avoid using the hair dryer with wet hands. Do not place or store the hair dryer near any water tanks, areas containing water, or environments with high humidity.
- 2.** The hair dryer should not be used in proximity to bathtubs filled with water, showers, wash basins, or any other water-containing vessels. Its use while bathing or showering is strictly forbidden.
- 3.** When operating the hair dryer, it is mandatory to utilize a standard power outlet and verify the socket's output voltage. The hair dryer and other electrical appliances should be operated independently of one another.
- 4.** Ensure that the voltage applied is in accordance with the rated voltage specified on this appliance.
- 5.** Do not leave the appliance unattended while it is being switched on.
- 6.** After use, or in the event of a power failure while in use, it is imperative to disconnect the appliance from the electrical outlet. Grasp the plug firmly and remove it from the outlet to ensure safety.
- 7.** If the hair dryer operates sporadically or intermittently, cease use immediately.
- 8.** Avoid exerting excessive force on the power cord. Do not tamper with or attempt to repair the power cord. Discontinue use if the power cord or plug shows signs of damage or becomes hot during use.
- 9.** Prevent the hair dryer from being subjected to significant impact or heavy drops.
- 10.** Keep the hair dryer away from coal gas and other flammable substances, including volatile solvents, paint thinners, and aerosols.
- 11.** Minimize the use of the hair dryer in the bathroom. If it must be used in the bathroom, unplug it after use. Due to the proximity to water, it remains hazardous even when the hair dryer is switched off. For increased protection and enhanced safety, it is advised to install an earth leakage circuit breaker with a rated operating current not exceeding 30mA within the electrical circuit that powers the bathroom. For the installation and verification of safety, please consult a certified electrician.
- 12.** Refrain from cleaning the hair dryer with any diluents, benzene, or other solvents.

13. Exercise caution to prevent hair from becoming entangled in the air inlet during use. Do not insert any objects into the air outlet or inlet, as this could cause the device to malfunction or result in electric shock. If the air inlet or outlet is obstructed while the device is operating, immediately stop use, disconnect from power, and clear any obstructions from the air inlet or outlet. After the appliance has cooled for a few minutes, attempt to restart it. If the hair dryer does not resume normal operation when power is reconnected, seek service from a professional repair center.

14. Avoid directing the airflow towards the eyes or other sensitive areas during use of the hair dryer.

15. Dispose of the product packaging materials responsibly to prevent any risk of suffocation, particularly to infants, and store the hair dryer out of children's reach. Vigilance is required when the hair dryer is used by or near children or individuals with disabilities.

16. Children should not be permitted to play with this product.

17. Restrict the use of the hair dryer to its intended purposes, namely blow-drying and hair styling.

18. Refrain from using any accessories that are not supplied by the manufacturer along with the hair dryer.

19. This hair dryer is intended solely for domestic use.

20. Maintain at least 10cm of distance between the hair and the air inlet while using the device to prevent hair from being drawn into the hair dryer.

21. Be mindful of the hair dryer's orientation during use and ensure that the air outlet is not positioned too close to the hair.

Caution: Please maintain a minimum distance of over 3cm between the air outlet and hair.

Note: The hair dryer should not be used while bathing or in the shower.



Instructions for Use

1. Insert the plug into the power socket.

2. Use the temperature and wind speed control switches to adjust settings as required.

Instructions for After Use

1. Switch off the appliance and disconnect it from the power source.
2. Place the device on a heat-resistant surface and allow it to cool down completely.
3. Before cleaning, detach the air nozzle from the hair dryer.
4. Store the appliance in a secure, dry, and clean area.

Settings

Switch	Setting	Function
Blow Speed/ Temperature	* _ Normal Temperature	Dries hair using ambient air without causing damage to the hair.
	II _ High Speed/ Temperature	Produces a strong airflow to quickly dry wet hair.
	I _ Low Speed/ Temperature	Offers a gentle breeze for hair styling. Provides ideal heat for drying while giving extra protection to prevent hair from overheating.
	0	The device is turned off

Maintenance Instructions

1. Do not attempt to repair, disassemble, or modify the hair dryer yourself.
2. Should the power cord or plug become damaged, discontinue use immediately to avoid any hazard, and contact a professional repair service for repair or replacement.
3. If the air turns cold when the hot setting is selected, or if sparks or signs of redness are observed within the hair dryer, cease use at once and consult a professional repair service.
4. Common Faults and Remediation Methods:

Problem	Cause	Solution
The product does not function.	The power socket connected to the product is not energized.	Ensure that the power outlet is operational.
	The product has overheated and has automatically shut off.	Switch off the hair dryer and unplug it, allowing it to cool for several minutes. Before re-powering, examine the air inlet to confirm it's free from obstructions such as lint, hair, or other debris.
	The voltage of the connected power supply may not match the product's required voltage rating.	Check that the electrical supply's voltage corresponds with the hair dryer's recommended voltage rating.

Specifications

Product	Foldable Mini Hair Dryer
SKU	PD-LSFMHD-WH
Rated Voltage	AC 220V - 240V
Rated Frequency	50/60Hz
Rated Power	1000W - 1300W
Speed Motor	19000 RPM
Noise level	75dB
Wind capacity	15L/m
Wind speed	13m/s
Weight	400g
Size	150x65x183mm

Warranty

Products that you buy directly from our **Porodo** website or shop come with a 24-month warranty.

When you buy **Porodo** products from any of our approved sellers, you only get a 12-month warranty. If you want to extend this warranty, go to our website at **<https://porodo.net/warranty>** and fill out the form with your information. Don't forget to upload a picture of the product too. After we've checked and accepted your request, we'll send you an email to confirm that your product's warranty has been extended.

For more info, please check:

<https://www.porodo.net/warranty>

Contact Us

If you have any questions about this Privacy Policy, please contact us at:

info@porodo.net

Website: **porodo.net**

Service Support: **support@porodo.net**

Instagram: **[porodo](https://www.instagram.com/porodo)**