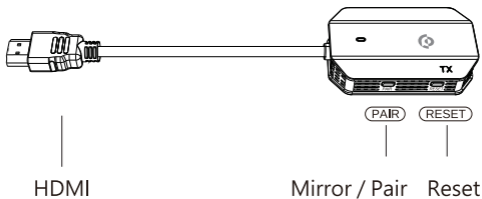


# WIRELESS HDMI TO HDMI

## AUDIO & VIDEO

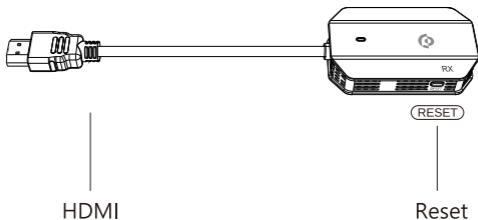
## Transmitter (TX)

Easily mirror whatever shows on your laptop or mobile screen, ideal for video-watching, game-play, and idea sharing.



## Receiver (RX)

Display the contents passed from your transmitter on the big screen like HDTV or projector screen.



# How to mirror

## 1 Install the wireless receiver (RX):

Insert the wireless receiver (RX) into the HDMI port of the TV and connect the Type-C connector to an independent power supply (5V/1A).

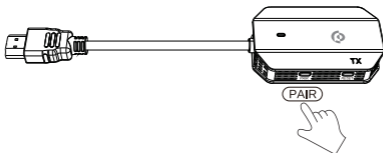
## 2 Connect the wireless transmitter (TX):

Connect the wireless transmitter (TX) to the HDMI port of the computer or phone, and connect the Type-C connector to an independent power supply (5V/1A) to ensure sufficient power supply. Wait for a few seconds until the flashing light on the transmitter (TX) stops flashing, and the automatic screen projection will begin.



## 3 Stop/restart mirroring:

To stop or restart mirroring, click the screen projection/pairing button on the wireless transmitter (TX).

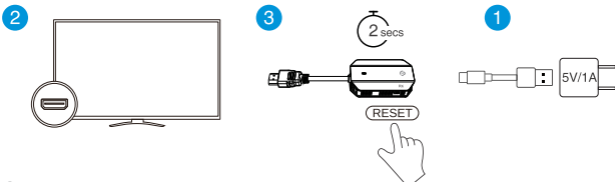


Note: The product is already paired by default and can be used without pairing again.

# How to pair the receiver:

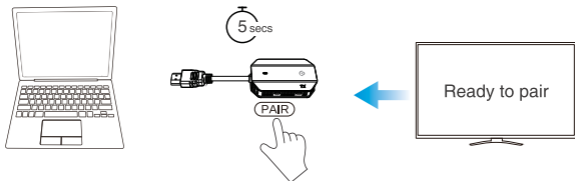
## 1 Enable pairing mode on the receiver:

- (1) Connect the wireless receiver (RX) to a power source via the Type-C connector.
- (2) Connect the wireless receiver (RX) to the TV via the HDMI end.
- (3) Press and hold the "RESET" button on the wireless receiver (RX) for about 2 seconds until the screen displays "Ready to pair".



## 2 Press the screen projection/pairing button on the wireless transmitter (TX):

Connect the wireless transmitter (TX) to the HDMI port of the computer and connect the Type-C connector to an independent power supply (5V/1A). When the screen displays "Ready to pair", press and hold the screen projection/pairing button on the transmitter for 5 seconds to complete the pairing.



**Note:** The "RESET" button on the wireless receiver (RX) has two different settings depending on the length of time it is pressed:

- (1) Press and hold for 2 seconds: Enable pairing mode on the wireless receiver (RX) for pairing with the wireless transmitter (TX).
- (2) Press and hold for 10 seconds: Restore the wireless receiver (RX) to its original settings.

## Product informations

- **Resolution ratio** : 1080P 60Hz
- **Interface** : HDMI
- **Display Output** : HDMI 1920x1080/60p
- **Power** : DC 5V/1A
- **Include** : Transmitter \* 1 , Receiver \* 1  
TYPE C \* 2

### FCC statement

This device complies with part 15 of the FCC Rules. Operation is subject to the following two conditions: (1) this device may not cause harmful interference (2) this device must accept any interference received, including interference that may cause undesired operation.

Note: This equipment has been tested and found to comply with the limits for a Class B digital device, pursuant to part 15 of the FCC Rules. These limits are designed to provide reasonable protection against harmful interference in a residential installation. This equipment generates, uses, and can radiate radio frequency energy and, if not installed and used in accordance with the instructions, may cause harmful interference to radio communications. However, there is no guarantee that interference will not occur in a particular installation.

If this equipment does cause harmful interference to radio or television reception, which can be determined by turning the equipment off and on, the user is encouraged to try to correct the interference by one or more of the following measures:

- Reorient or relocate the receiving antenna.
- Increase the separation between the equipment and receiver.
- Connect the equipment to an outlet on a circuit different from that to which the receiver is connected.
- Consult the dealer or an experienced radio/TV technician for help.

Changes or modifications to this product not authorized by Apple could void the electromagnetic compatibility (EMC) and wireless compliance and negate your authority to operate the product.

This product has demonstrated EMC compliance under conditions that included the use of compliant peripheral devices and shielded cables between system components. It is important that you use compliant peripheral devices and shielded cables between system components to reduce the possibility of causing interference to radios, television sets, and other electronic devices.

### RF Exposure Statement(Receiver):

To maintain compliance with FCC's RF Exposure guidelines, this equipment should be installed and operated with minimum distance of 20cm the radiator your body. This device and its antenna(s) must not be co-located or operation in conjunction with any other antenna or transmitter.

### Transmitter (TX)



TX



Tablet



Smartphone



Set-top box



Switch&PS4/5



PC computer



Laptop



DV



Camera

### Receiver (RX)



RX



Monitor



Projector



HD TV

---

hey@powerology.me | www.powerology.me

 powerology     powerology.me

Made in China

