

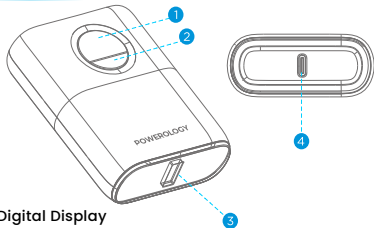


10000mAh

ULTRA-COMPACT PD POWER BANK

SKU:PPBCHA04-PU PPBCHA04-BU PPBCHA04-BK
PPBCHA04-TI PPBCHA04-GN

1. Diagram



- 1-Digital Display
- 2-Function Button
- 3-USB Quick Charge 3.0 Port
- 4-Type-C Power Delivery (PD) Port for Input & Output

2. Technical Specifications

- *Capacity: 10,000mAh / 37Wh
- *Battery Type: Dual 21700 Lithium-ion Cells
- *Input (Type-C PD): PD 18W (5V/3A, 9V/2A, 12V/1.5A)
- *Output:
 - Type-C PD: 20W (5V/3A, 9V/2.22A, 12V/1.67A)
 - USB QC 3.0: (5V-6.5V/3A, 6.5V-9V/2A, 9V-12V/1.5A)
- *Total Power Output: Max 5V/3A
- *Dimensions: L 81.3mm x W 60.88mm x H 26.0mm
- *Weight: Approximately 175g

3. Operating Instructions

Recharging the Portable Battery:

Connect the power bank to a power source using a Type-C cable. During recharging, the display flashes to show current power levels.

Powering Your Devices:

Connect your device with its charging cable to the power bank's USB or Type-C port. The digital display shows the remaining battery life momentarily and then switches off after charging begins. To stop charging before completion, double-press the button. If inactive, the power bank shuts down after 35 seconds.

4. Product Features

- Equipped with a digital display for monitoring power levels.
- Rubberized exterior for durability and grip.
- High-efficiency power transfer.
- High-capacity lithium-ion cells ensuring safety and longevity.
- Designed for low power loss when not in use.
- Extended standby duration.
- Universal compatibility with a variety of smartphones.
- Smart circuitry protects against overcharge, discharge, and short circuits.
- Compact form factor for portability.
- Includes a 30cm charging cable for convenience.

5. Safety Precautions

- Avoid unattended charging of the battery.
- Keep away from excessive moisture or liquids; store in a ventilated, dry area when not in use.
- Refrain from damaging or making holes in the power bank's shell to prevent risks such as overheating or explosion.
- Protect the device from high heat sources, including appliances and direct sunlight, especially above 40°C, like inside a hot vehicle.
- Avoid using near strong electric or magnetic fields, including close proximity to microwaves, to preserve device integrity.
- If any unusual smell, heat, discoloration, or deformation occurs, stop usage immediately and safely dispose of the device.
- Service or repairs should only be performed by professional technicians, especially if the device is damaged, leaking, or malfunctioning. Do not attempt self-repair as it could be hazardous.
- Dispose of the power bank responsibly at an appropriate battery recycling center; it is not suitable for regular trash disposal.
- Battery capacity may diminish if unused for three months or more. However, normal capacity should be regained after 4-3 complete charging cycles.